

Accessories

Mixing canulas	Fig.	Item no.
Mixing canulas 1:1, inner Ø 5.4 mm, pink, 100 pieces, for dosing and mixing unit Sidomix II/ Sidomix and similar units	5	622002
Adapter-sets	Fig.	Item no.
Adapter-set, for 2 x 1 kg-cask	6	172634
Adapter-set, for 2 x 6 kg-cask	7+9	172636
Material casks	Fig.	Item no.
Set material cask with quick fitting coupling, 2 x 2 liter	8	172640
Stands	Fig.	Item no.
Stand small, for 2 x 6 kg-cask	-	172631
Stand tall, for 2 x 25 kg-cask	-	172632
Hoses	Fig.	Item no.
Connecting hoses complete, 2 pieces	-	172633

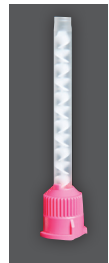


Fig. 5



Fig. 6

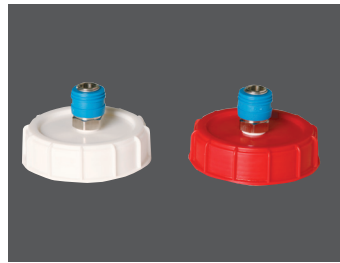


Fig. 7

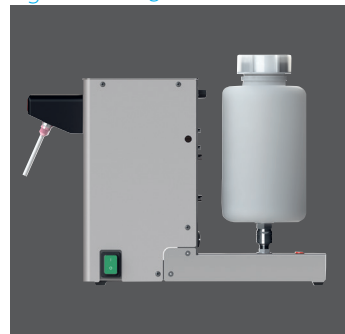


Fig. 8



Fig. 9

MADE IN GERMANY

Wassermann is a medium-sized, owner-operated company with head office in Hamburg. We design and produce high-quality technical devices in Germany. Our main users are dental laboratories, dental clinics and various industrial areas worldwide.

Why a Wassermann product?

Wassermann products are manufactured from high-quality materials and the proportion of plastics used is intentionally kept as low as possible. Our devices are known for their suitability for daily use, functionality and longevity. As a result, the users place high levels of trust in the Wassermann brand. We feel it is our duty to support our customers on a daily basis when it comes to safety, service and productivity. Technological perfection, optimum quality and especially sustainability are the benchmarks we set. Thanks to the combination of these values, the family-owned company, since its establishment in 1927, has gained worldwide recognition as a manufacturer of high-quality products.



Further information are available on our website at www.wassermann.hamburg



/WassermannDentalmaschinen

Your Dental Dealer _____

WaSil soft and WaSil speed



Duplicating Silicone



Wassermann Dental-Maschinen GmbH
Rudorffweg 15-17 · 21031 Hamburg · Germany
Phone: +49 (0)40 730 926-20/ -24 · Fax: +49 (0)40 730 37 24
export@wassermann-dental.com · www.wassermann.hamburg
www.facebook.com/WassermannDentalmaschinen

Duplicating Silicone

WaSil soft & WaSil speed

- Addition-vulcanizing duplicating silicone, 1:1
- DIN EN ISO 14356
- Type 2 - irreversible
- Duplicating material
- WaSil duplicating silicones are suitable for mixing with dosing units. We recommend the use of our dosing and mixing unit **Sidomix II**.



Dosing and Mixing Unit Sidomix II (Item no. 172980)

Material and time saving: Loss-free filling of several flasks with one mixing cannula.

The mixing head with separate outlets makes mixing of components impossible – even when attaching and removing the mixing cannulas.



WaSil soft

Recommended for duplicating with conventional flasks

- High reproduction of detail graphic accuracy
- Easy model removal caused by reduced hardness

Technical information WaSil soft

Mixing ratio	1 : 1
Vacuum mixing	40 sec.
Working time 23 °C	> 5 min
Curing time 23 °C	30 – 45 min
Tear strenght (DIN 53504)	approx. 1.8 N/mm ²
Elongation at tear (DIN 53504)	approx. 220 %
Tear-growth resistance (ASTMD 624 B)	approx. 3.0 N/mm ²
Hardness Shore A	16–18
Colour	yellow

Trading unit	Fig.	Item no.
WaSil soft 2 x 1 kg component A / B	1	656060
WaSil soft 2 x 6 kg component A / B	2	656061
WaSil soft 2 x 25 kg component A / B	–	656062



Fig. 1



Fig. 2

Major Features

WaSil speed

For the adhesive tape and flasking techniques

- Easy and economical dosing
- Ideal low viscosity

Technical information WaSil speed

Mixing ratio	1 : 1
Vacuum mixing	40 sec.
Working time 23 °C	3–4 min
Curing time 23 °C	10 min
Tear strenght (DIN 53504)	approx. 2.2 N/mm ²
Elongation at tear (DIN 53504)	approx. 310 %
Tear-growth resistance (ASTMD 624 B)	approx. 6.5 N/mm ²
Hardness Shore A	> 24
Colour	turquoise

Trading unit	Fig.	Item no.
WaSil speed 2 x 1 kg component A / B	3	656070
WaSil speed 2 x 6 kg component A / B	4	656071
WaSil speed 2 x 25 kg component A / B	–	656072



Fig. 3



Fig. 4